



بِسْمِ اللَّهِ الرَّحْمَنِ الرَّحِيمِ

The background of the slide is white and features several large, stylized, overlapping swirls in light green, light blue, and light purple. Scattered throughout the background are numerous small, yellow, triangular shapes, some pointing upwards and others downwards, creating a festive or celebratory feel.

Posture & related musculoskeletal disease

B. Vahdatpour M.D.

**Associate Professor of Physical
Medicine & Rehabilitation**

Isfahan university of medical sciences

○ **posture** is the relative position of the parts of the body, usually associated with a static position.

○ abnormal posture contributes to patients' **complaints**

○ many impairments within the neuromusculoskeletal system are **reflected** in an individual's **posture**.

○ Posture :erect standing , postures in sitting and during activities

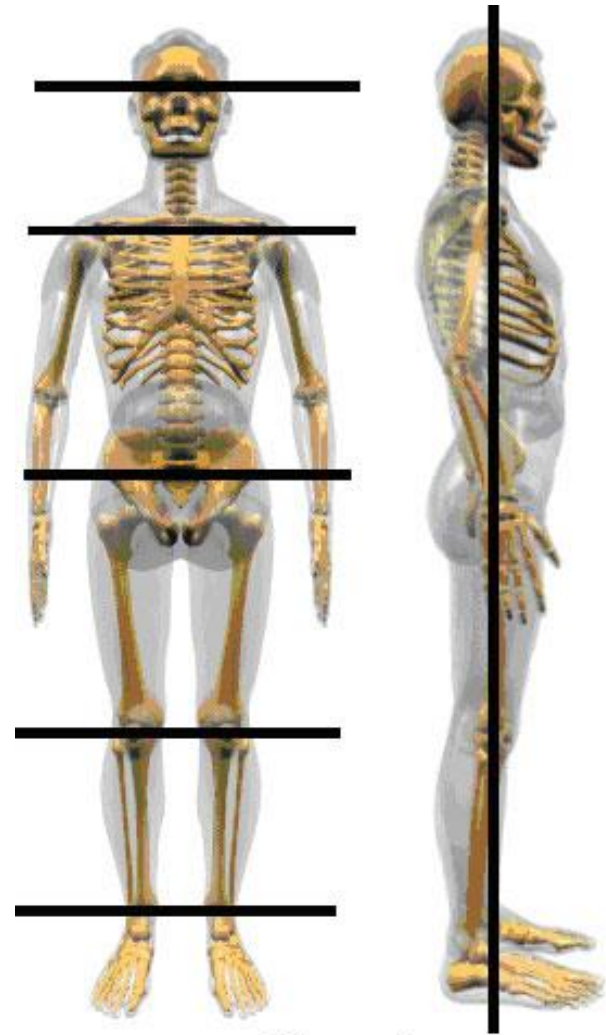
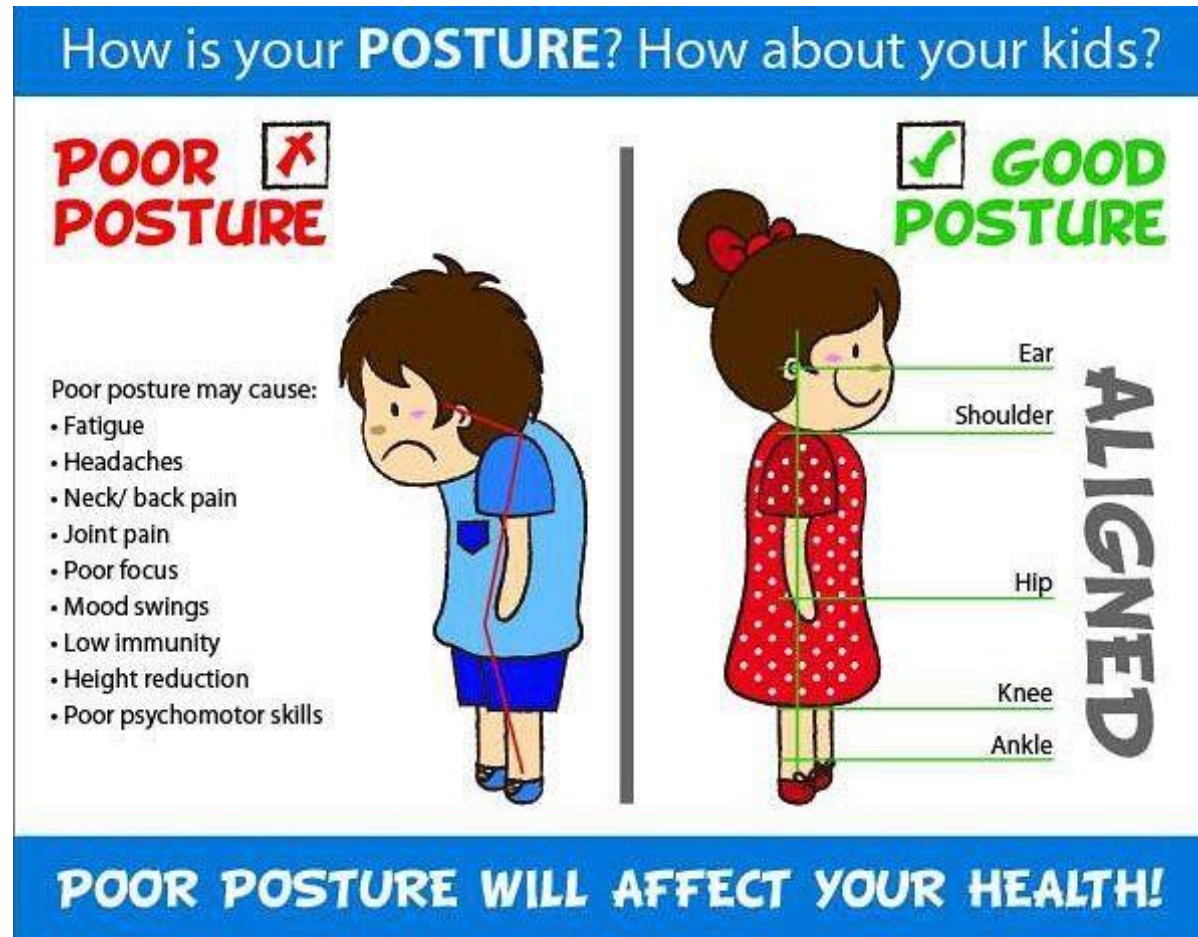


Figure 1

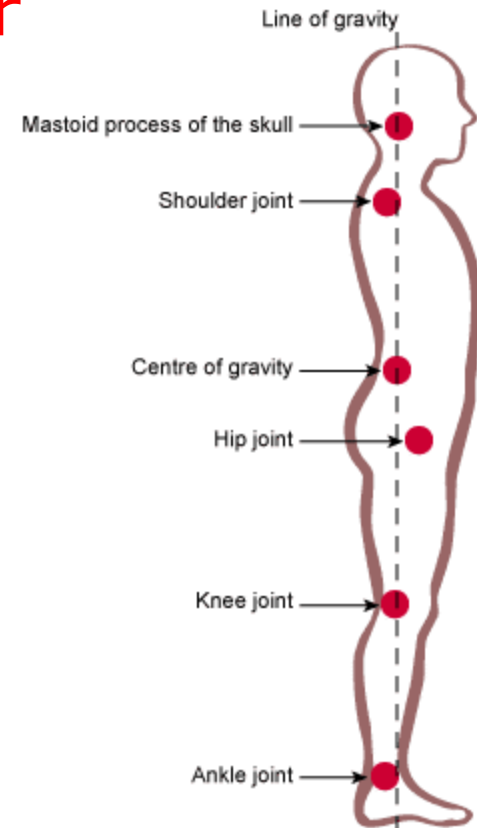
- **faulty** posture has been associated with such diverse complaints as:

- headaches
- respiratory
- digestive problems
- Axial pain (like back pain)

– ...



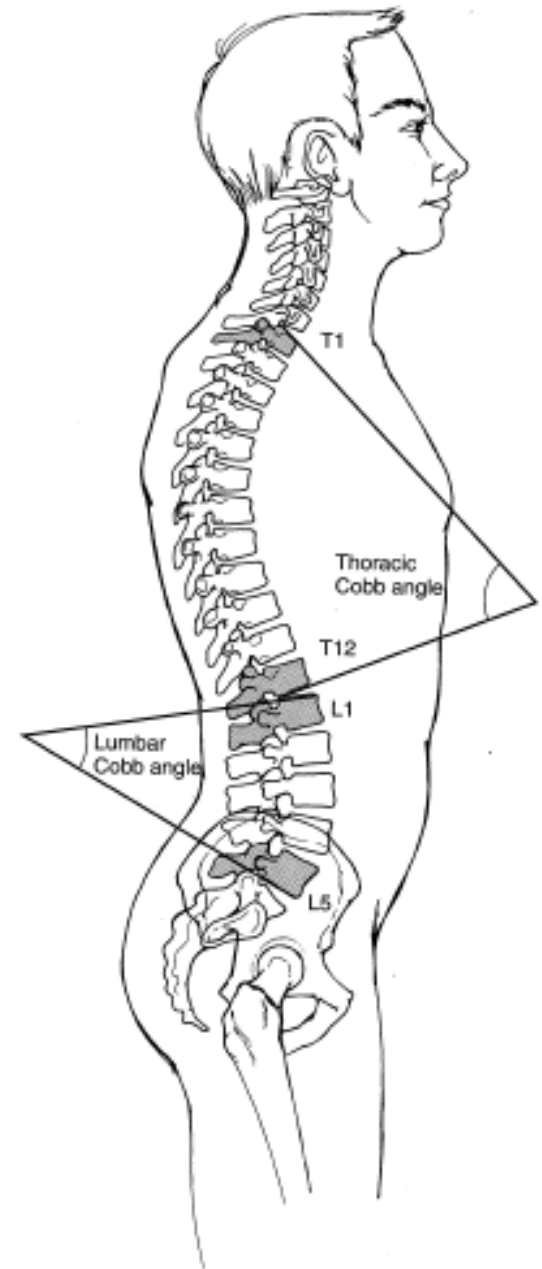
○ The **adult spine** is characterized by a **kyphosis** in the **thoracic** and **sacral** regions in which the curves are convex posteriorly and a **lordosis** in the **cervical** and **lumbar** regions in which the curves are concave posteriorly.

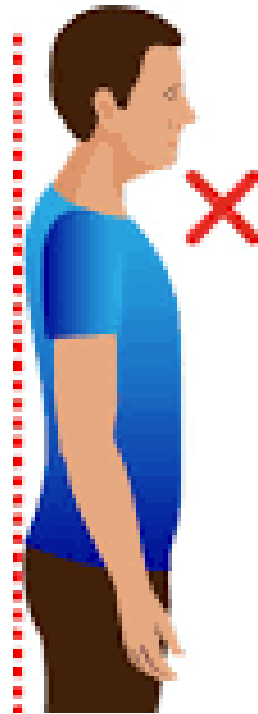
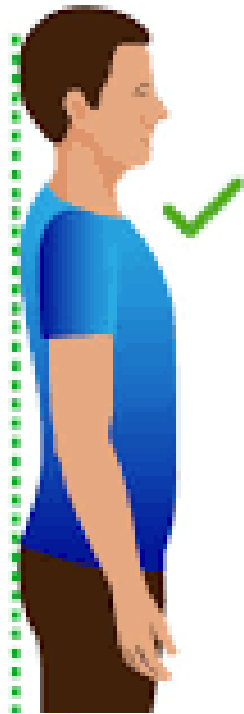


- At birth, the spine is entirely kyphotic, and consequently, the thoracic and sacral curves are primary curves.
- Development of head control by approximately 4 months of age induces the development of a cervical lordosis, and a child's progression to upright standing and bipedal ambulation lead to the formation of the lumbar lordosis.



- *Mean Cobb angles of 20 to 70° are reported for the lumbar region and 20 to 50° for the thoracic region .*

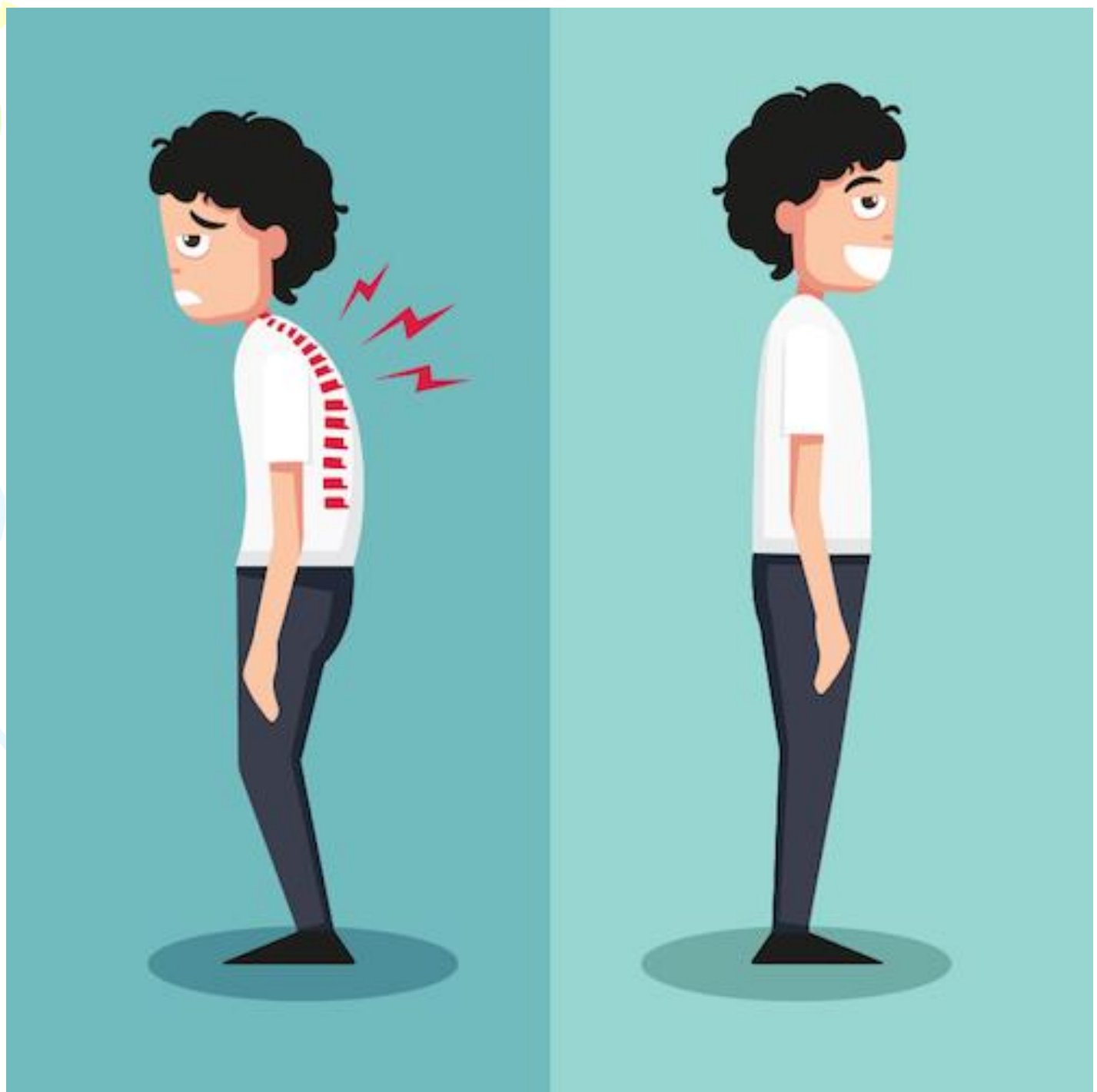




Forward Head Posture

Real Men Real Style

RMRS
Real Men Real Style













部分
包邮

学生 坐姿纠正



全新升级款
儿童坐视宝

实用新型发明专利





(SF) 顺丰包邮



前300名 付定金减20

再送纳米补水仪

预售尾款价

¥ **68** 起



©MSG 2007



Wide, padded shoulder straps

Lightweight material

Wear both straps!

Padded back

Waist strap

Multiple compartments

15% of child's body weight

For a
48-pound
child, 15% is



For a
59-pound
child, 15% is



For a
76-pound
child, 15% is



Straps should be on both shoulders



WRONG

LIGHT LOAD
No more than 15%-20%
of body weight

Wide straps



PROPERLY WORN

Shoulders should not be rounded



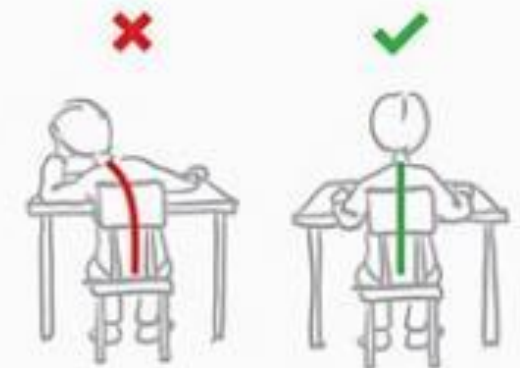
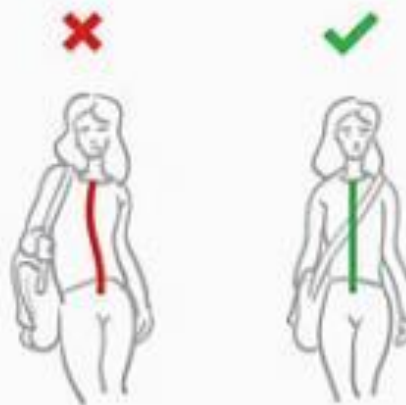
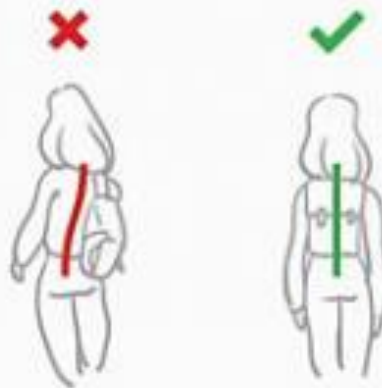
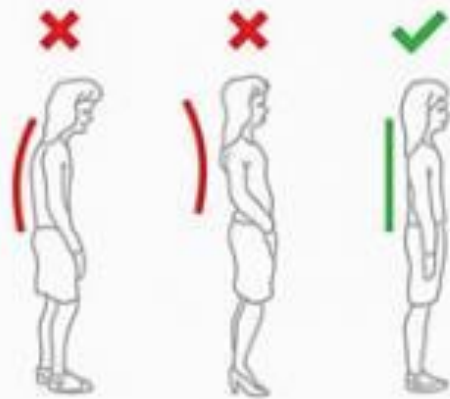
WRONG

Correct and incorrect student behaviours causing postural defects

Body posture while resting and moving

Way of carrying backpack or school bag

Way of sitting in school benches







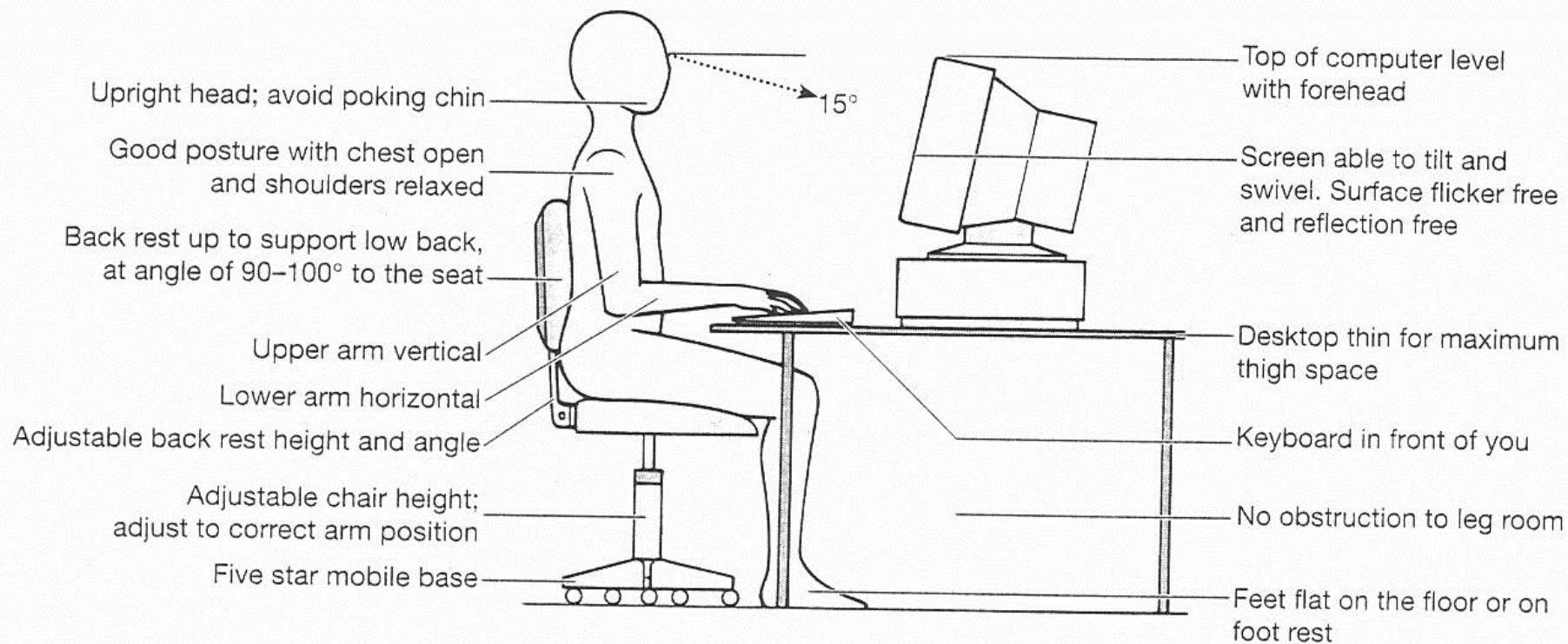


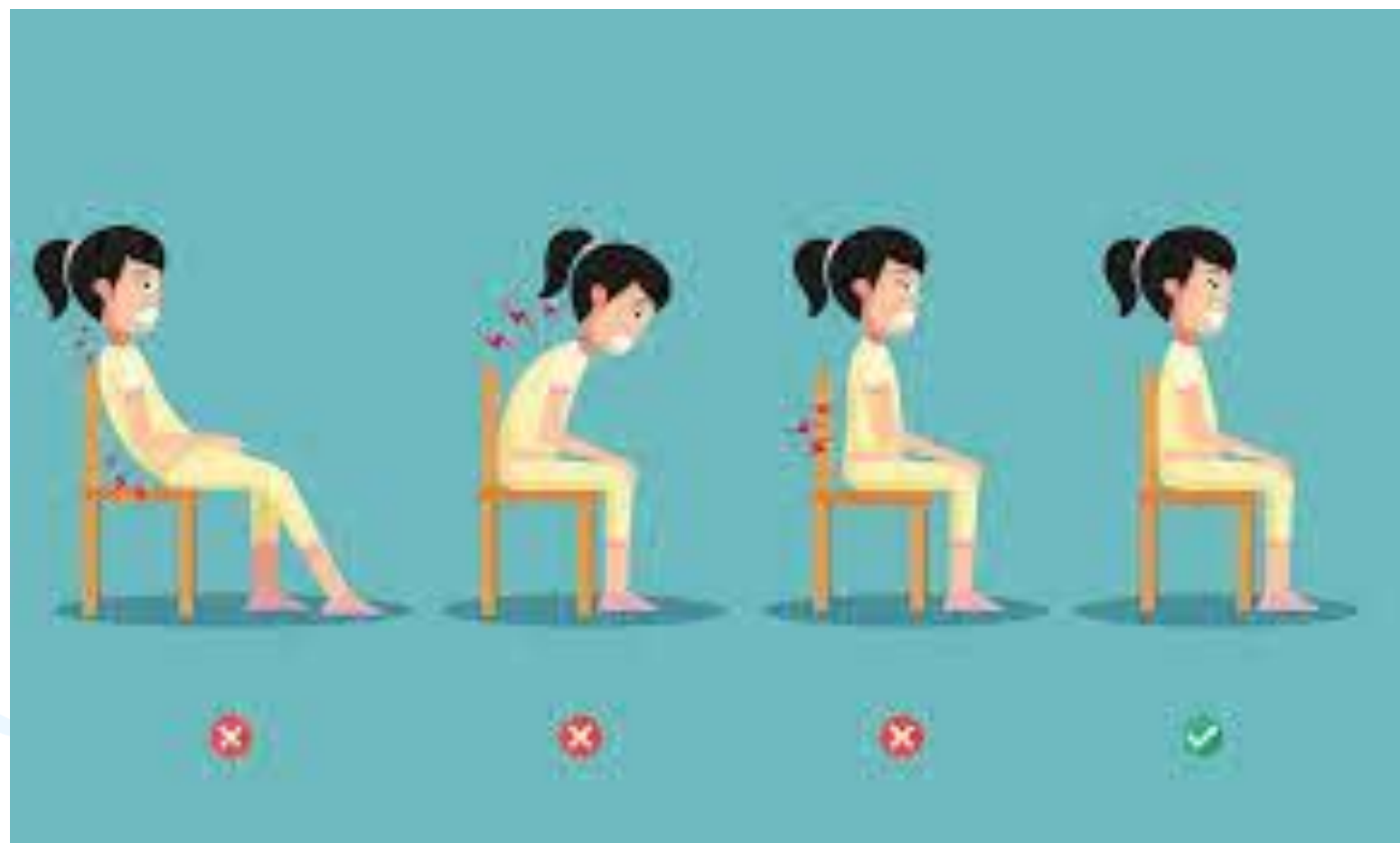
Figure 15.5 Computer workstation.



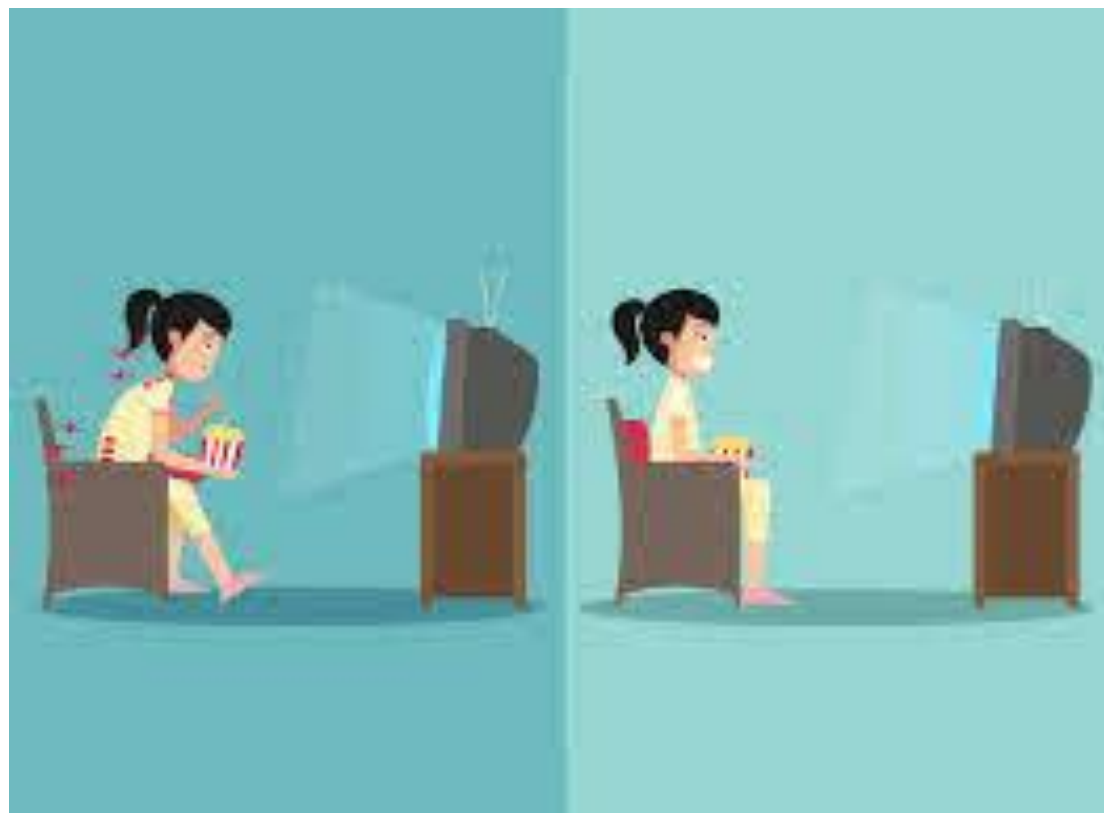
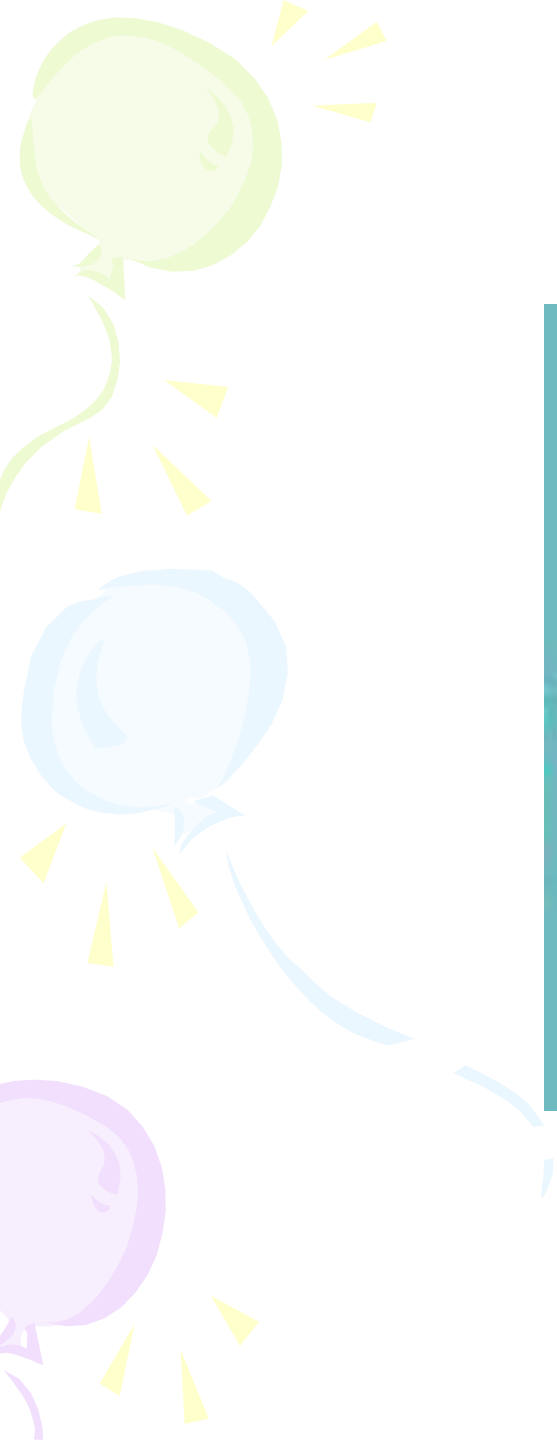












Physiotherapy

Bad/Right Postures



designed by freepik.com

Three balloons (green, blue, and purple) are positioned vertically on the left side of the slide. Each balloon has a string and several small yellow triangular flags attached to it. The balloons are partially cut off by the left edge of the frame.

SCOLIOSIS

Scoliotic spine



Normal spine



ADAM.

Signs of scoliosis

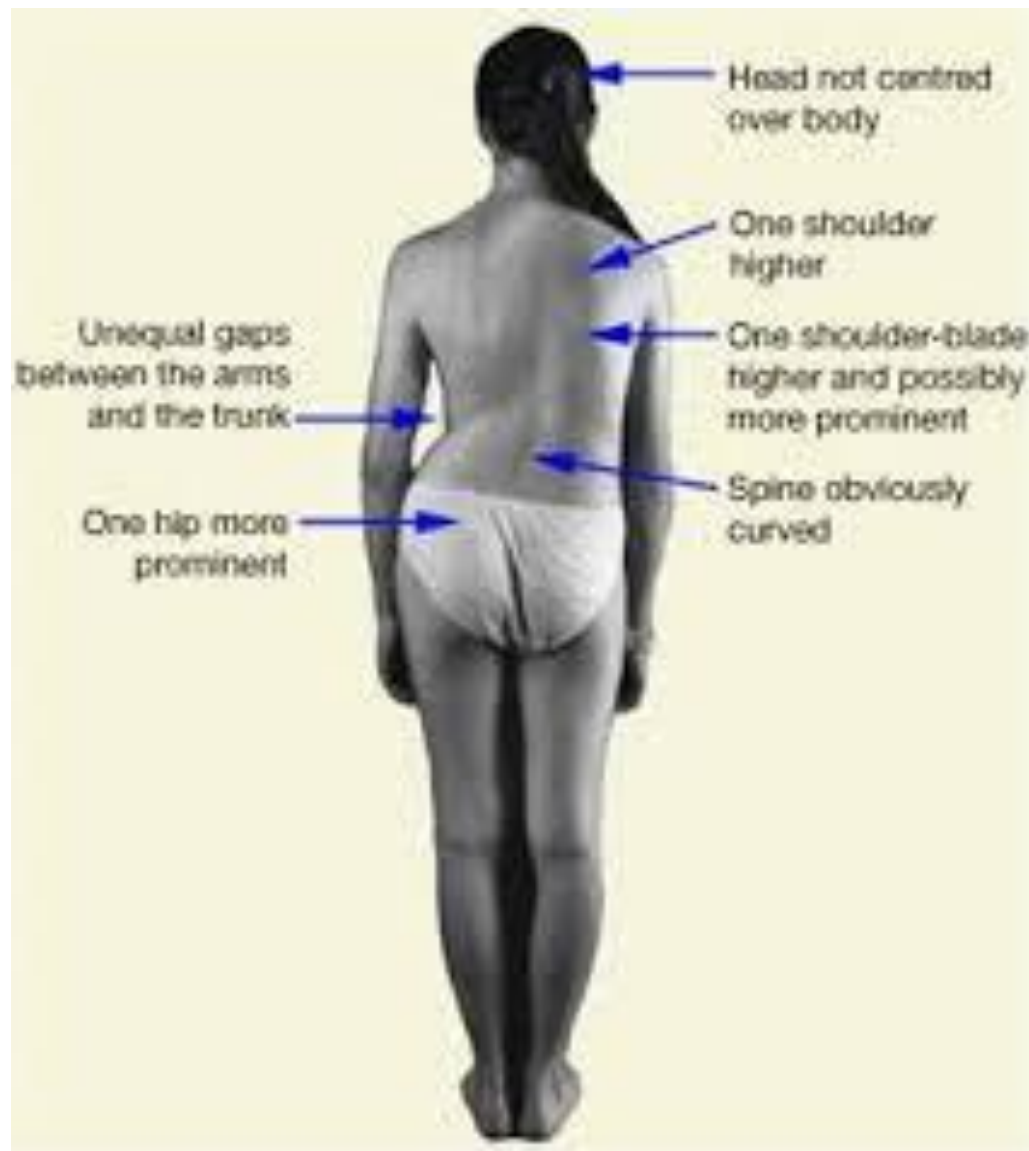


Uneven
shoulders

Curve in spine

Uneven hips

ADAM.



Head not centred
over body

One shoulder
higher

One shoulder-blade
higher and possibly
more prominent

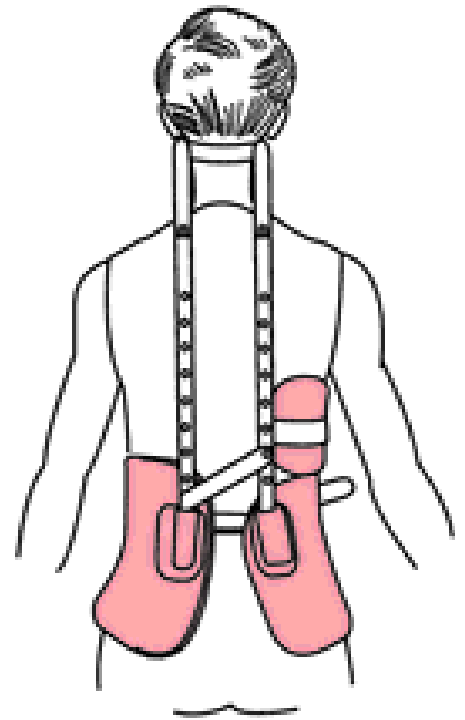
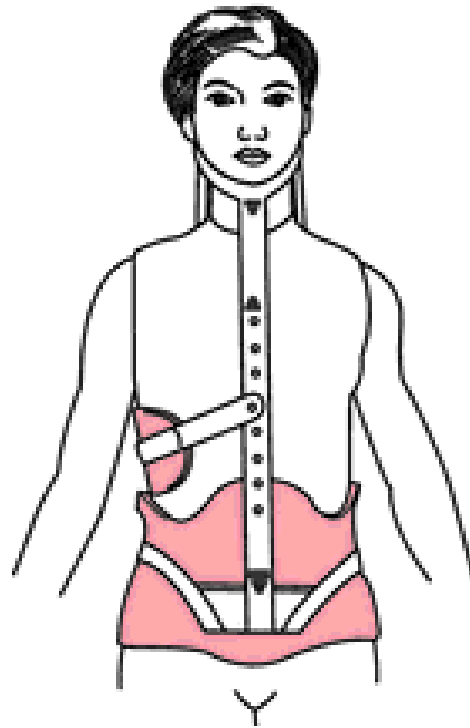
Spine obviously
curved

Unequal gaps
between the arms
and the trunk

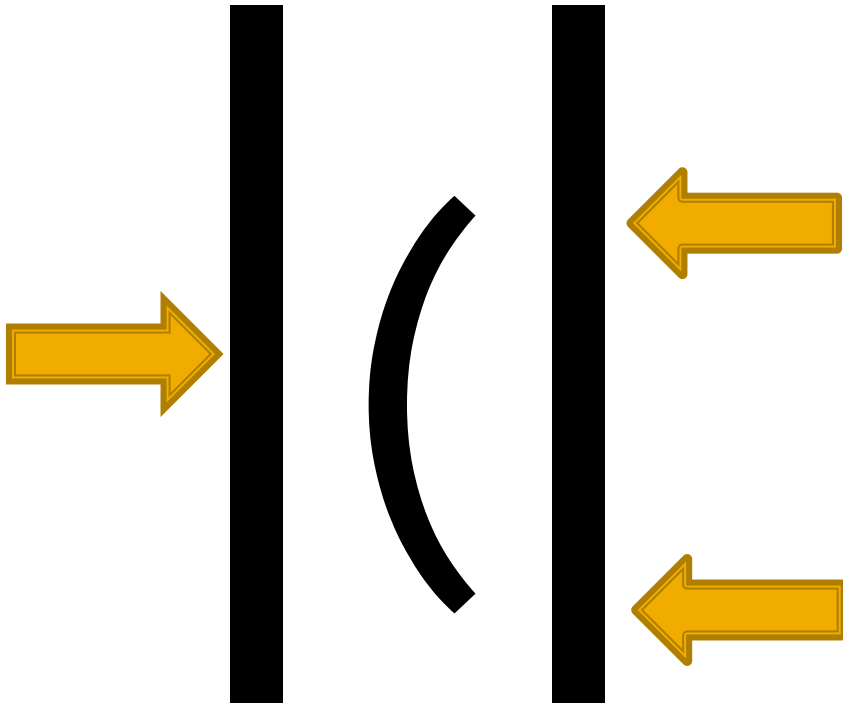
One hip more
prominent



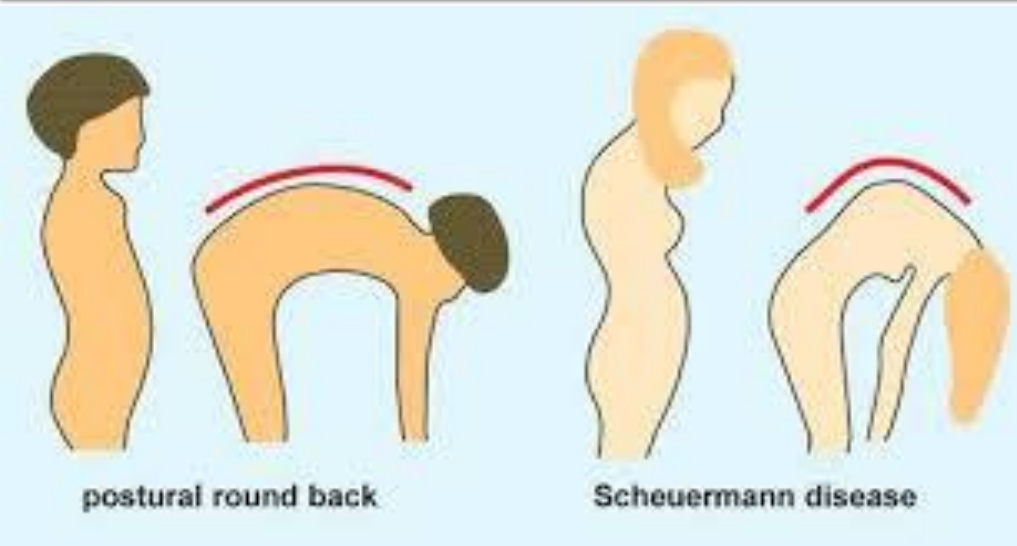
The Milwaukee (CTL SO) brace



Thoracolumbosacral orthosis(TLSO)

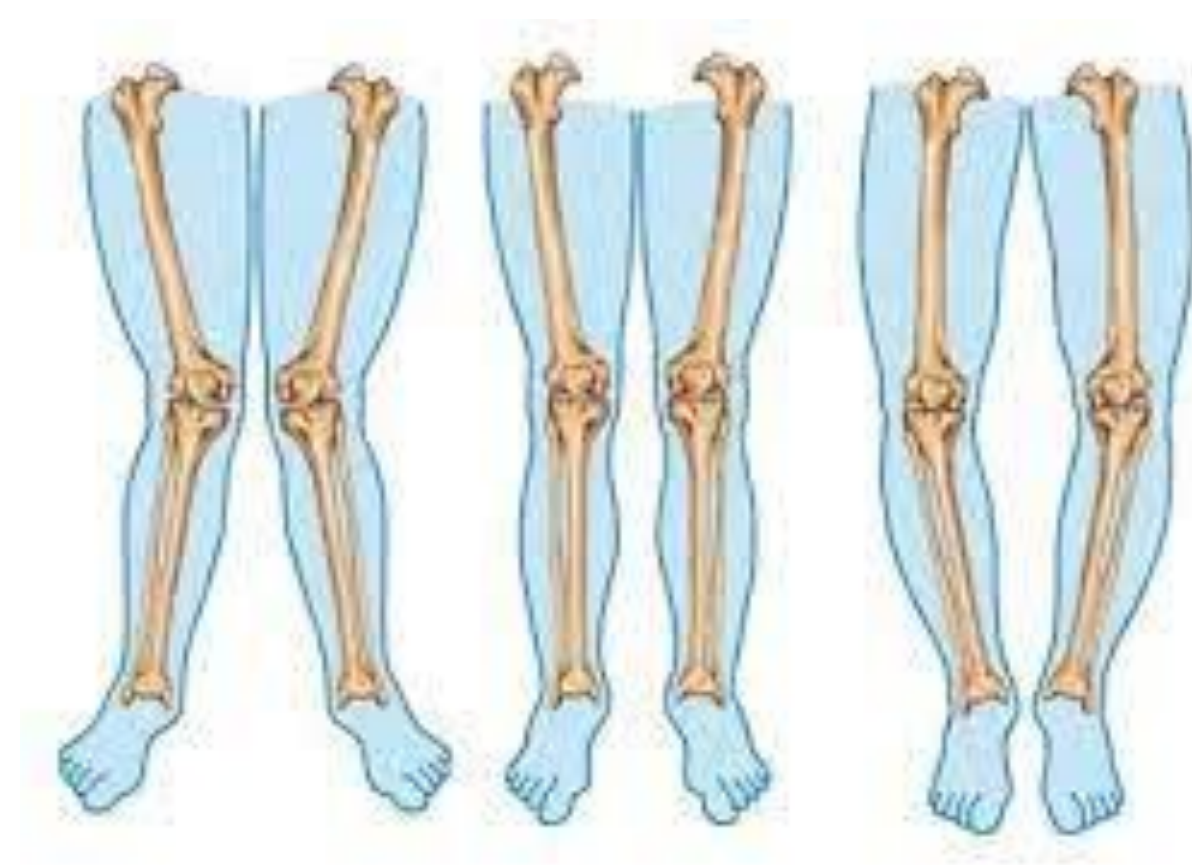
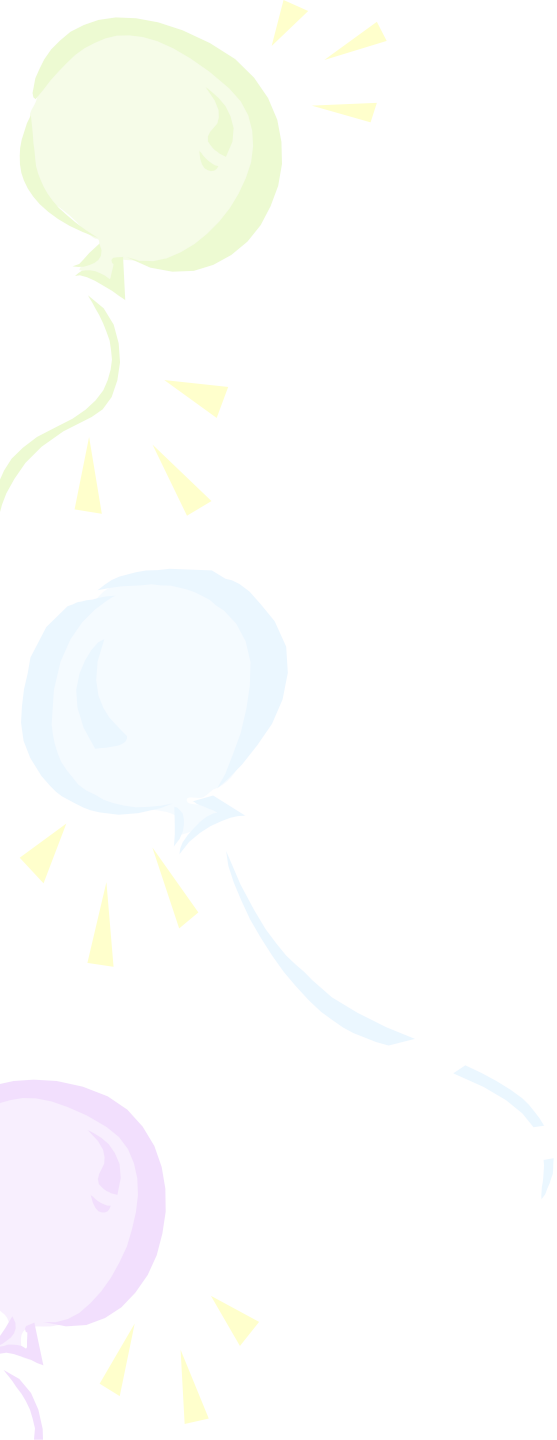


Schuermann's disease

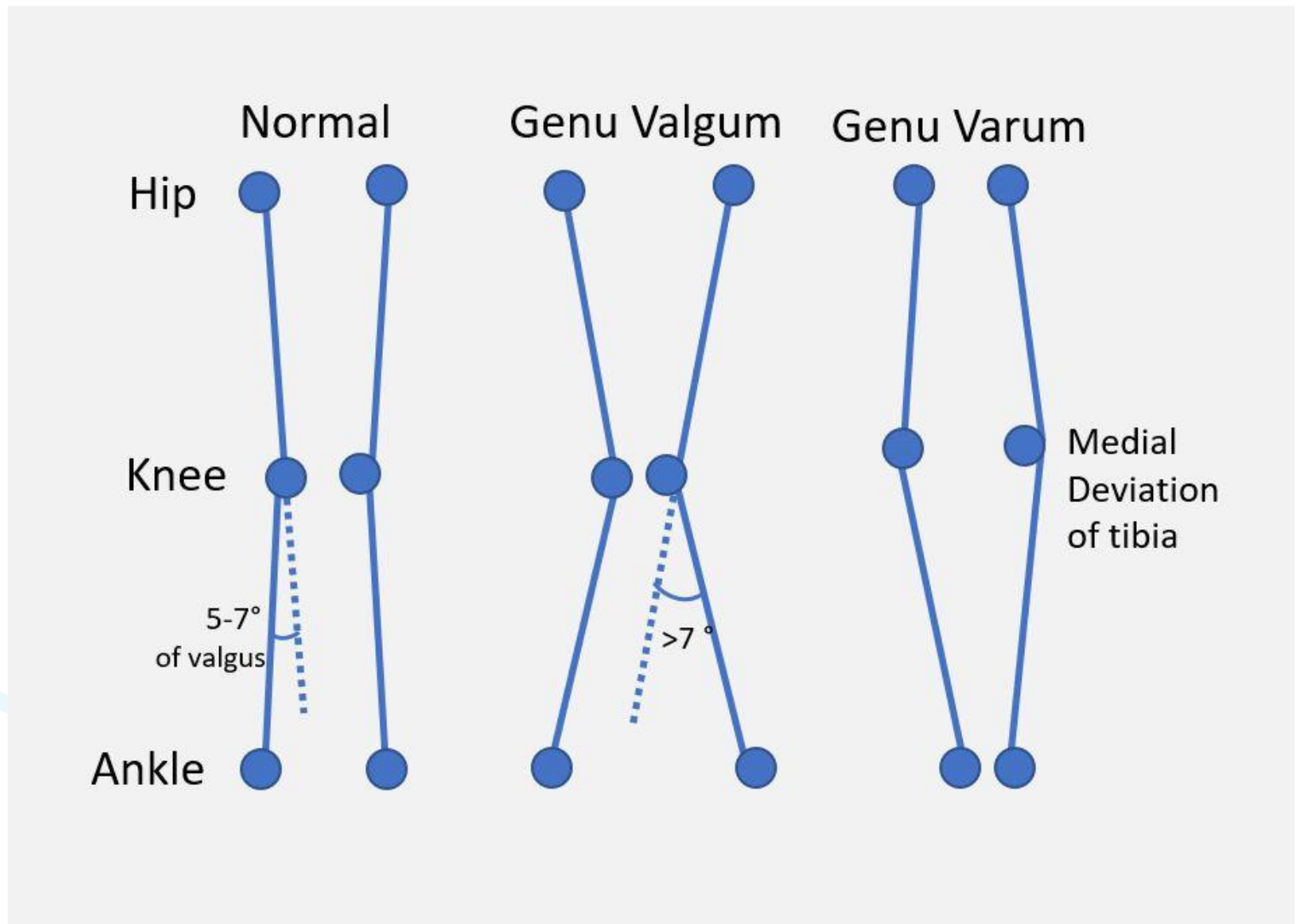
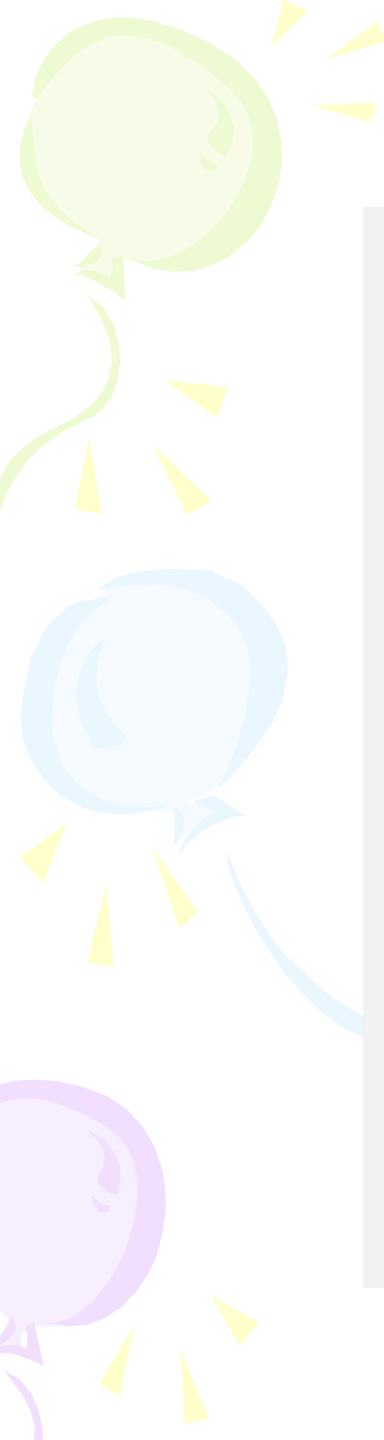




KNEE DEFORMITY



shutterstock.com • 135275159



Inspection: Standing

Genu
varum



"Bowed Legs"

Genu
valgum



"Knock Knees"

Genu
recurvatum



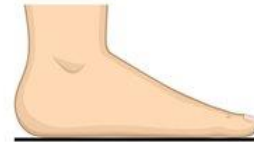
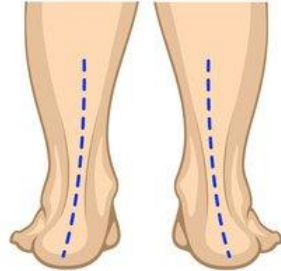
"Back Knee"



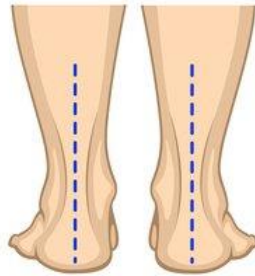
FOOT DEFORMITY

Deformation of the foot

Flat foot
(Fallen arch)



Normal foot



Hollow foot
(High arch)

